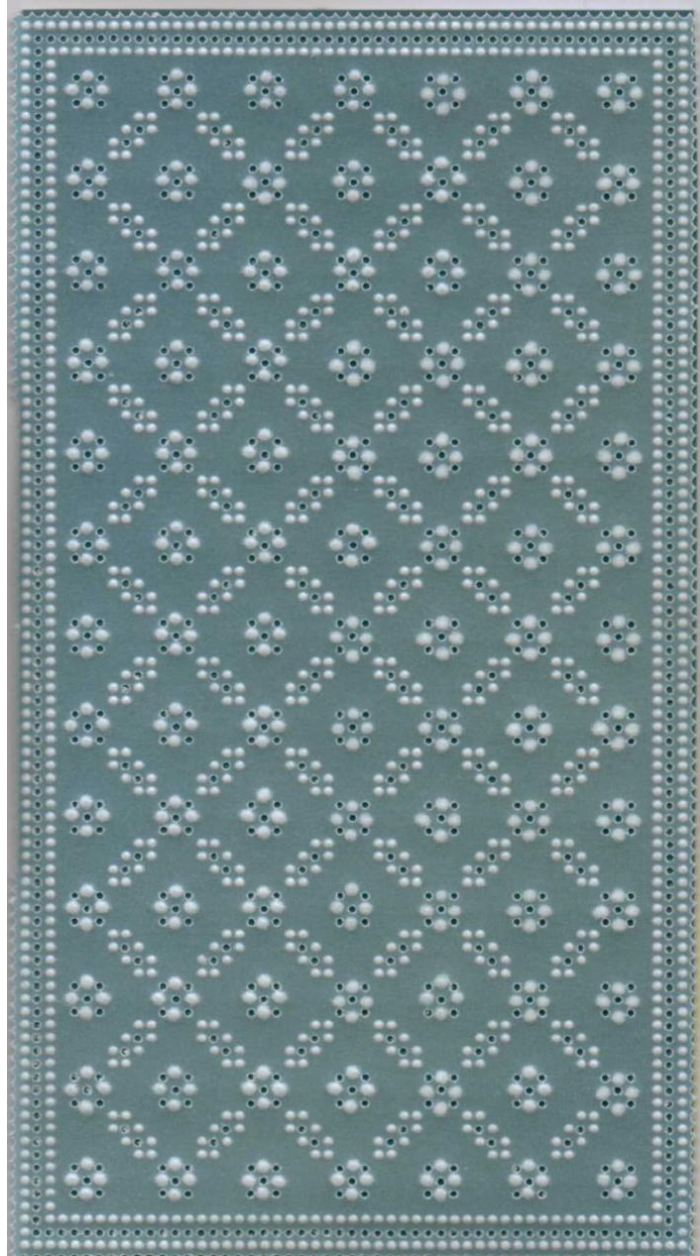
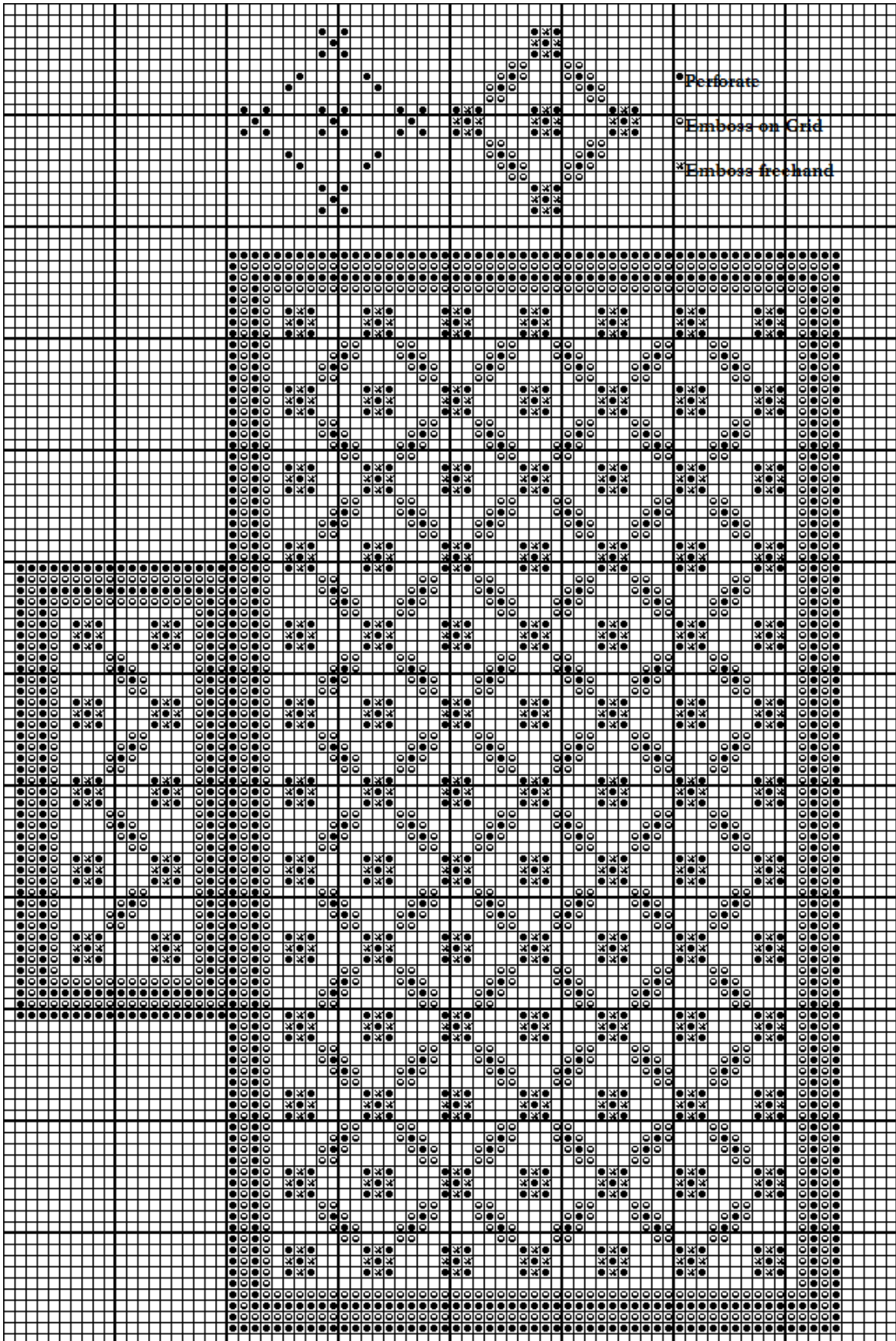


Purely Parchment

Uncut Diamonds



Grid Chart



This design has worked using the following:

PCA Bold Straight Grid

PCA Single Needle Tool

PCA Small Ball Tool

PCA Medium Ball Tool

Although a PCA Bold Straight Grid has been used for this design, any size or Brand of straight grid can be used.

Instructions:

1. Perforate and then emboss on grid where indicated using the Small Ball tool.
2. Emboss freehand dots where indicated using the Medium Ball tool. These should be larger than the dots made with the grid.
3. Place the parchment back onto the grid but DO NOT secure, as the holes are unlikely to match the grid due to the freehand embossing. Using the grid to re-perforate is only to prevent uneven holes.
4. Using the Single Needle tool, very carefully SHALLOWLY re-perforate every hole. Take care not to perforate deeply or the holes may distort.
5. Cut around the outer edge then fold the tab on the perforated fold line.
6. Attach to card by stitching through the fold line perforations.