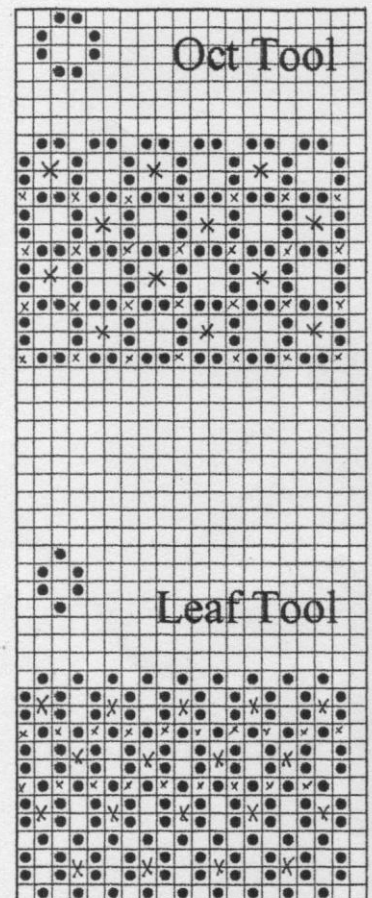
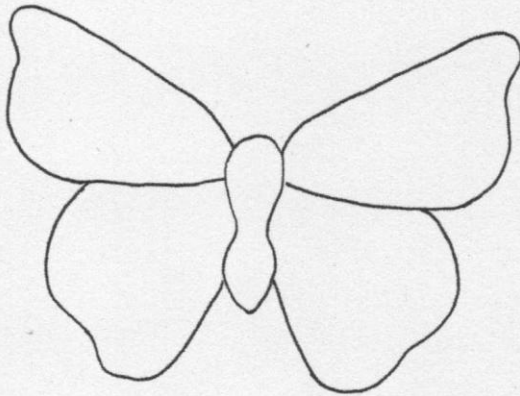


Gridwork Butterfly



1. Trace two butterflies using white pencil then rub the wrong side with tumble dryer sheet.
2. Deeply emboss the outline using a PCA Micro ball tool or equivalent.
3. Place on either a Fine or Bold Grid and using an Oct and Leaf tool, perforate the wings or using a single needle and 2 needle tool perforate the designs as shown in the grid patterns. **Take care when perforating that you do not perforate into the embossed outlines.**
4. Emboss between every alternate grid pattern and in the small one hole spaces as indicated by the crosses on the grid patterns. Also emboss or stipple the body area.
5. Cut out the unembossed grid patterns. In the areas toward the shaped edges where it is not possible to perforate a complete pattern, use a single needle tool and make extra perforations to enable the area to be cut. These must be done as neatly as possible and although will not be the same shape as full design, will keep continuity of the pattern.
6. Using a scalloped edge tool perforate around the outer edges. Emboss within each scallop using either a small ball tool or sun tool. Alternatively perforate around the edge using a 2 needle tool and cut with scissors or perforate using a Mini Stamp Edge tool.
7. Using silicone glue, stick the bodies together, placing flower stamens in between for antennae.